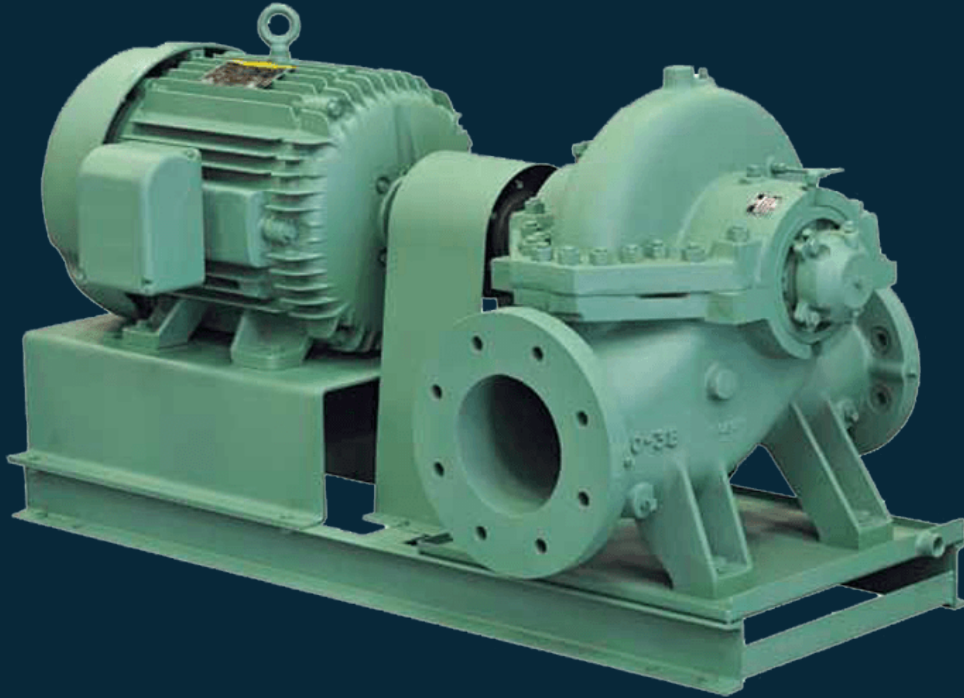




TA SERIES — SINGLE STAGE DOUBLE SUCTION HORIZONTAL SPLIT CASE PUMP

Catalog



Taco's TA Series Pumps feature heavy-duty, long lasting quality for a variety of water circulation applications. Proven performance and longevity, balanced double-entry impeller design, and modular components are just a few of the TA Pumps' attributes. As a result, they require minimal maintenance but are easy to service when needed.



FEATURES & BENEFITS

Six Major Benefits for TA Series Pump Users

- Maximum operating pressure of 300 PSI. The rugged, heavy-duty casing design allows higher working pressures
- Quick access for service and maintenance. The top half of the casing is easily removed to allow service of rotating unit without disturbing piping system.
- Low NPSH requirements and increased efficiency. The impeller is specifically designed to assure minimum NPSH and maximum pump efficiency as well as stable performance throughout the operating range.
- Compact arrangement increases seal and bearing life. The mechanical seal option reduces the shaft length and minimizes shaft deflection, thereby increasing both seal and bearing life.
- Balanced axial loads for maximum bearing life. The double suction design virtually eliminates axial thrust and reduces bearing loading. The bearings are heavy-duty type, grease lubricated.
- No need to replace casing if wear rings require service. The case wear rings are separate from the case itself and are replaceable.

Heavy-Duty Casing For Greater Strength

Extra heavy construction of the pump casing provides greater structural integrity and reduces the risk of distortion. The pump feet are cast integrally with the bottom half of the volute casing and extended to provide support to the inserts which carry the pump bearings.

Maintenance is Easy and Fast

With the top half of the casing removed, the complete pump rotating assembly can be withdrawn without

disturbing the piping system. Pump inlet and outlet flanges are cast in the bottom half casing. Flanges and casing are tapped and plugged for gauge and priming connections. An air release valve and flushing connections are provided in the upper casing. The top and bottom half casings are aligned by dowels, sealed by a gasket and bolted together.

High Efficiency Impeller

The impeller is generally of the double-entry type with Francis vanes, keyed to the shaft and locked in position. The impeller hubs are designed to accommodate impeller wear rings, if required. Impellers are balanced dynamically and hydraulically. Passage ways are smoothed for maximum efficiency.

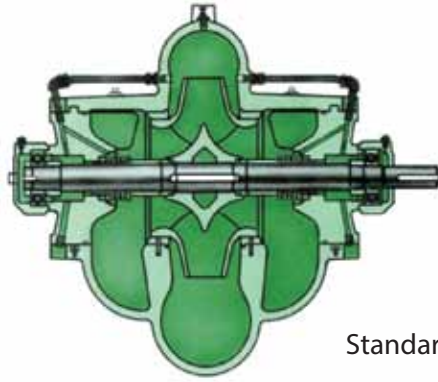
Over 300 models, ranging from 1/40 HP to 400 HP offer the maximum flexibility to select the optimum pump design for the specific system requirements.

The full range of Taco products is more than pumps. Taco is also your single source company for a wide variety of HVAC and other hydronic specialty components including; multi-purpose valves, suction diffusers, heat transfer equipment, diaphragm tanks and more.

The TA Series Split Case Pump model represents a major advance in pump design. By utilizing a modular construction technique, pump performance from 60 GPM up to 6,000 GPM is available from just three basic bearing and shaft modules.

Modular construction results in:

- Multiple seal and construction options for application flexibility.
- Simplified maintenance
- Design flexibility to accommodate future performance needs.



Standard Mechanical Seal

CONSTRUCTION & SPECIFICATIONS

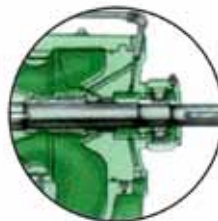
MATERIALS OF CONSTRUCTION		
	Standard	Optional
Casing	Cast Iron	---
Impeller	Bronze	Cast Iron
Wear Ring	Bronze	Cast Iron
Shaft	Carbon Steel	Stainless Steel
Insert	Cast Iron	---
Shaft Sleeve	Bronze	Stainless Steel
OPERATING SPECIFICATIONS		
	Standard	Optional
Pressure	300 PSI Maximum Operating Pressure (125 ANSI or 250 ANSI Flanges Standard)	---
Mechanical Seal Temperature	250°F	300°F
Packing Temperature	250°F	300°F
0034eP-F2	Case Wear Ringd	Impeller Wear Rings
0034eP-SF2	Recirculation Line	Filter & Abrasive Separators
006e3	All Standard NEMA Motors (T or TS)	---

ADDITIONAL OPTIONS

- Drip Type Base
- Two Rotation Options
- Packed Stuffing Box
- Balanced Mechanical Seals

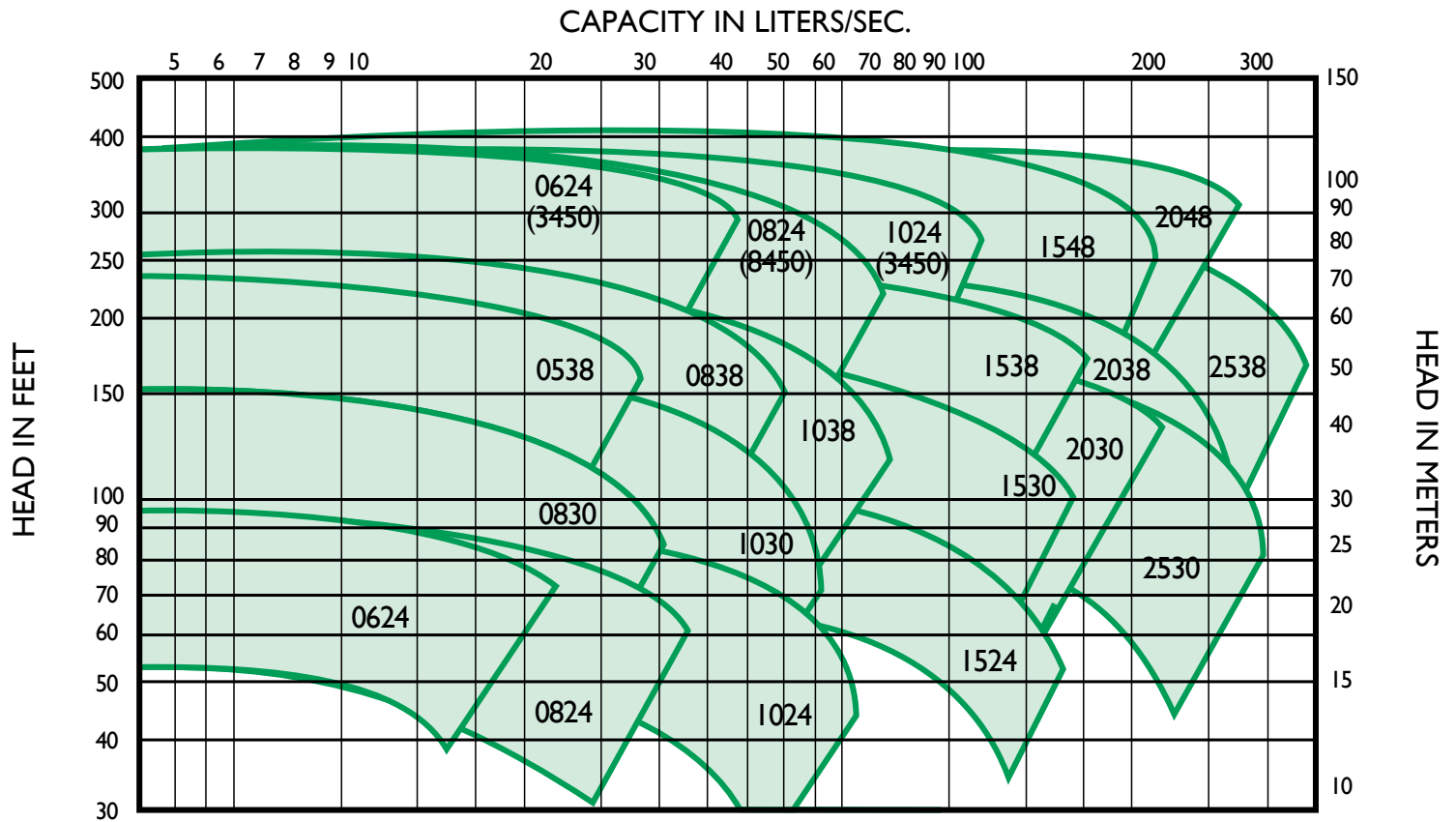


Optional Packing

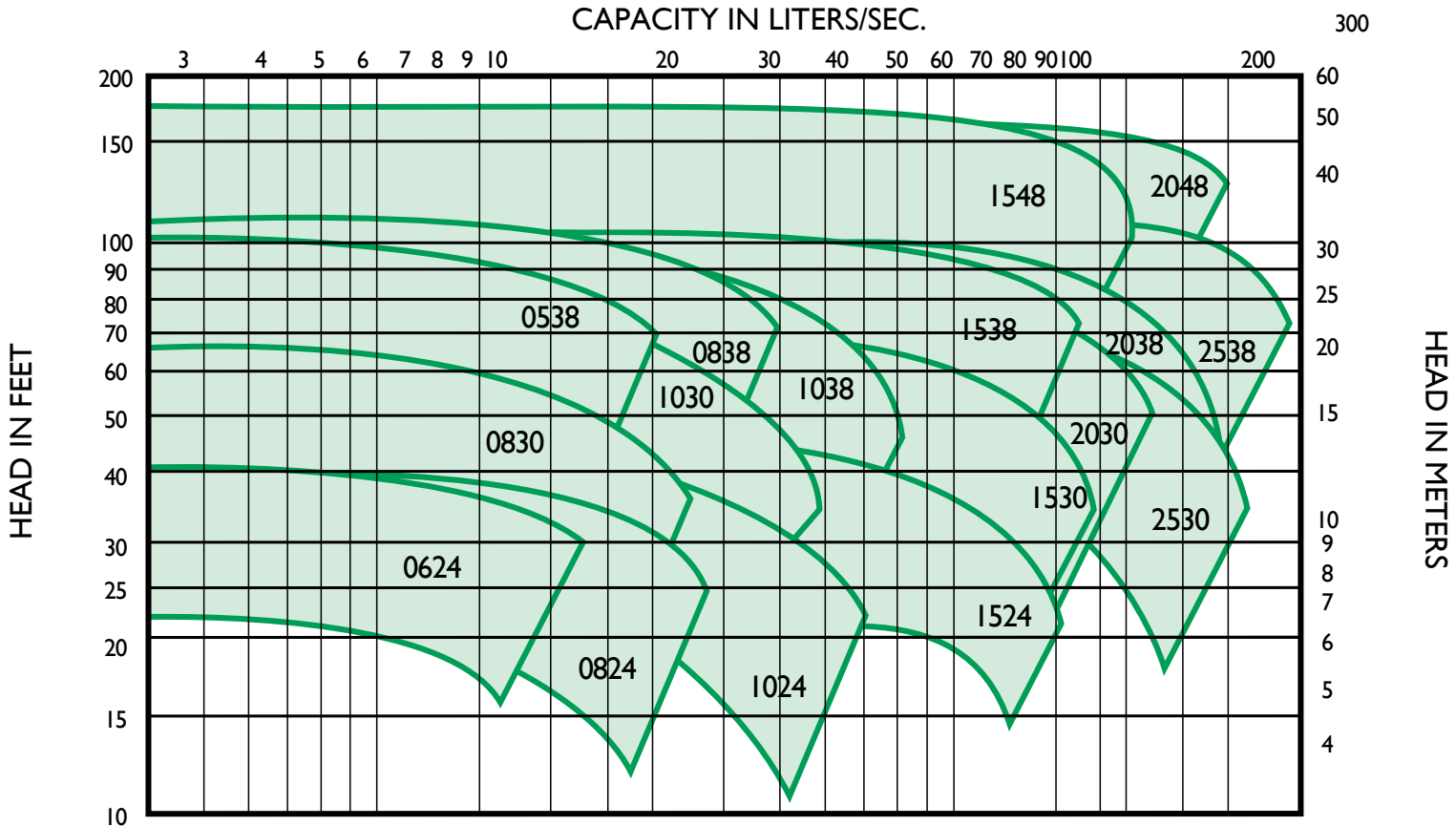


Optional Balanced Seal

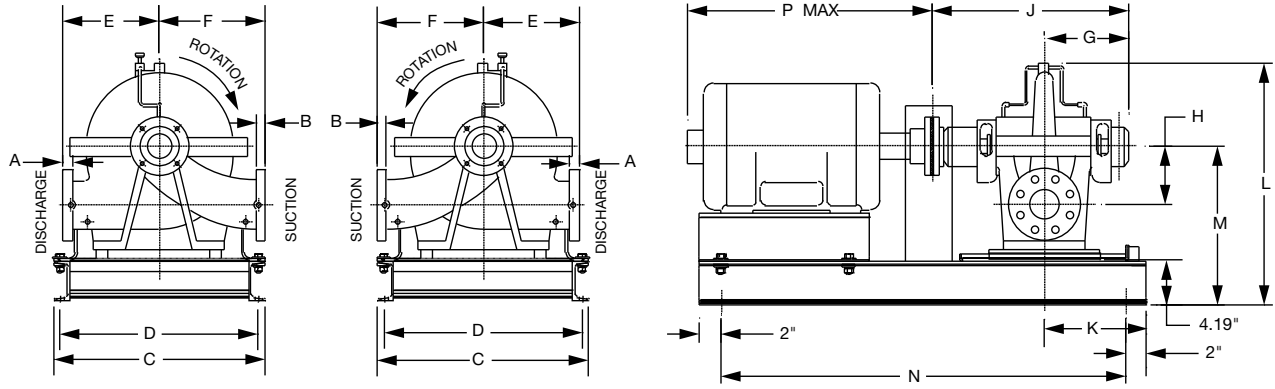
TA Series Performance Field 1750 RPM



TA Series Performance Field 1150 RPM



TA Series Dimensions



DIMENSIONS

Motor dimensions are approximate and vary by manufacturer and motor type.

MODEL NO. FLANGE SIZE	MOTOR FRAME	A DISCHARGE		B SUCTION		C	D	E	F	G	H	J	K	L	M	N	P
		ANSI Class 125	ANSI Class 250	ANSI Class 125	ANSI Class 250												
0538 3 x 2 (76 x 51)	213T	0.62 (16)	0.88 (22)	0.75 (19)	1.12 (28)	21.17 (538)	19.92 (506)	11.00 (279)	13.98 (279)	9.68 (246)	6.69 (170)	22.19 (564)	9.5 (241)	25.50 (648)	16.00 (406)	38.0 (965)	20.5 (521)
	215T																23.2 (589)
	254T																27.8 (706)
	256T																27.8 (706)
	284T																27.8 (706)
0624 3 x 2.5 (76 x 64)	145T	0.69 (25)	1.00 (25)	0.75 (19)	1.12 (28)	21.17 (538)	19.92 (506)	8.88 (226)	11.02 (280)	9.68 (246)	5.12 (130)	22.19 (564)	9.5 (241)	21.31 (541)	14.00 (356)	38.0 (965)	15.2 (706)
	182T																18.5 (470)
	184T																20.5 (521)
	213T																23.2 (589)
	215T																27.8 (706)
	256T																30.3 (770)
	284TS																33.4 (848)
	286TS																33.4 (848)
	324TS																33.4 (848)
	326TS																33.4 (848)
0824 4 x 3 (102 x 76)	182T	0.75 (19)	1.12 (28)	0.94 (24)	1.25 (32)	21.17 (538)	19.92 (506)	9.06 (230)	10.62 (270)	9.68 (246)	5.12 (130)	22.19 (564)	9.5 (241)	21.31 (541)	15.19 (386)	38.0 (965)	18.5 (470)
	184T																20.5 (521)
	213T																23.2 (589)
	215T																27.8 (706)
	254T																27.8 (706)
	286TS					30.3 (770)											
	324TS					33.4 (848)											
	326TS					33.4 (848)											
	364TS					33.4 (848)											
	365TS					33.4 (848)											
0830 4 x 3 (102 x 76)	184T	0.75 (19)	1.12 (28)	0.94 (24)	1.25 (32)	21.17 (538)	19.92 (506)	10.81 (275)	11.44 (291)	9.68 (246)	5.88 (149)	22.19 (564)	9.5 (241)	23.31 (592)	15.19 (386)	38.0 (965)	18.5 (470)
	213T																20.5 (521)
	215T																23.2 (589)
	254T																27.8 (706)
	254T																27.8 (706)
0838 4 x 3 (102 x 76)	213T	0.75 (19)	1.12 (28)	0.94 (24)	1.25 (32)	21.17 (538)	19.92 (506)	10.81 (275)	11.44 (291)	9.68 (246)	5.88 (149)	22.19 (564)	9.5 (241)	26.87 (682)	16.81 (427)	38.9 (965)	20.5 (521)
	215T																23.2 (589)
	254T																27.8 (706)
	256T																27.8 (706)
	284T																27.8 (706)
	286T																27.8 (706)
	324T																27.8 (706)
326T	27.8 (706)																

TA Series Dimensions, continued

DIMENSIONS

Motor dimensions are approximate and vary by manufacturer and motor type.

MODEL NO. FLANGE SIZE	MOTOR FRAME	A DISCHARGE		B SUCTION		C	D	E	F	G	H	J	K	L	M	N	P
		ANSI Class 125	ANSI Class 250	ANSI Class 125	ANSI Class 250												
1024 6 x 4 (152 x 102)	184T	0.94 (24)	1.25 (32)	1.00 (25)	1.44 (37)	21.17 (538)	19.92 (506)	9.81 (249)	12.19 (310)	11.81 (300)	6.69 (170)	27.75 (705)	9.5 (241)	27.00 (686)	17.57 (446)	40.0 (1016)	185(470)
	213T																20.5 (521)
	215T																
	254T																50.0 (1270)
	256T																23.2 (589)
	364TS					54.0 (1372)	33.4 (848)										
	355TS																
	404TS						38.3 (973)										
	405TS						64.0 (1626)										
	444TS						44.6 (1133)										
445TE																	
1030 5 x 4 (127 x 102)	213T	0.94 (24)	0.94 (32)	1.00 (24)	1.38 (35)	21.17 (538)	19.92 (506)	10.80 (274)	12.62 (3219)	9.68 (249)	6.69 (170)	22.19 (564)	9.5 (241)	25.87 (657)	16.81 (427)	38.0 (965)	20.5 (521)
	215T																
	254T																
	256T															48.0 (1219)	23.2 (589)
	284T																27.8 (589)
	286T																30.3 (770)
324T																	
1038 5 x 4 (127 x 102)	254T	0.94 (24)	1.25 (32)	0.94 (24)	1.38 (35)	21.17 (538)	19.92 (506)	13.75 (349)	13.38 (340)	11.81 (300)	7.50 (191)	27.75 (705)	9.5 (241)	28.50 (724)	17.57 (446)	23.2 (589)	27.8 (589)
	256T																
	284T																
	286T															50.0 (1270)	30.3 (770)
	324T																33.4 (848)
	326T																54.0 (1372)
364T																	
365T																	
1524 8 x 6 (203 x 152)	254T	1.00 (25)	1.44 (37)	1.13 (29)	1.62 (41)	21.17 (538)	19.92 (506)	12.19 (310)	14.38 (365)	10.94 (278)	7.50 (191)	24.63 (626)	9.5 (241)	28.81 (732)	19.57 (498)	23.2 (589)	27.8 (589)
	256T																
	284T																
	286T																
324T		30.3 (770)															
1530 8 x 6 (203 x 152)	254T	1.00 (25)	1.44 (37)	1.13 (29)	1.62 (41)	23.17 (539)	21.92 (557)	12.38 (314)	14.38 (365)	11.81 (300)	9.25 (235)	27.75 (705)	12.0 (305)	32.94 (837)	21.50 (546)	54.0 (1372)	23.2 (589)
	256T																
	284T																
	286T																
	324T															57.0 (1448)	27.8 (706)
	326T																30.3 (770)
364T		33.4 (848)															
365T																	
1538 8 x 6 (203 x 152)	284T	1.00 (25)	1.44 (37)	1.13 (29)	1.62 (41)	23.17 (589)	21.92 (557)	13.75 (349)	16.12 (409)	11.81 (300)	8.25 (210)	27.75 (705)	11.85 (301)	33.62 (854)	21.50 (546)	27.8 (706)	30.3 (770)
	286T																
	324T																
	326T																
	364T						33.4 (848)										
	365T																
	404T																
	405T						38.3 (973)										
444TT		68.0 (1727)															
445T		44.6 (1133)															
1548 8 x 6 (203 x 152)	324T	1.00 (25)	1.44 (37)	1.13 (29)	1.62 (41)	27.17 (690)	25.92 (658)	17.69 (449)	20.06 (510)	14.50 (368)	10.62 (270)	34.13 (867)	13.52 (343)	43.25 (1099)	25.44 (646)	30.3 (770)	33.4 (846)
	326T																
	364T																
	365T															64.0 (1626)	38.3 (973)
	404T																
	405T																44.6 (1133)
	444T																80.0 (2032)
	445T																48.4 (1229)
447T		53.4 (1356)															
449T																	

TA Series Dimensions, continued

DIMENSIONS

Motor dimensions are approximate and vary by manufacturer and motor type.

MODEL NO. FLANGE SIZE	MOTOR FRAME	A DISCHARGE		B SUCTION		C	D	E	F	G	H	J	K	L	M	N	P
		ANSI Class 125	ANSI Class 250	ANSI Class 125	ANSI Class 250												
2030 10 x 8 (254 x 203)	256T	1.13 (29)	1.62 (41)	1.19 (30)	1.88 (48)	23.17 (589)	21.92 (557)	15.19 (386)	17.06 (433)	13.63 (346)	11.25 (286)	31.32 (796)	12.0 (305)	37.75 (959)	25.44 (646)	57.0 (1448)	23.2 (589)
	284T																27.8 (706)
	286T																30.3 (770)
	324T																38.4 (973)
	326T																60.0 (1524)
	364T					38.3 (973)											
	365T					680 (1727)											
	404T					44.6 (1130)											
	405T					44.6 (1133)											
444T	48.4 (1229)																
2038 10 x 8 (254 x 203)	324T	1.13 (29)	1.62 (41)	1.19 (30)	1.88 (48)	27.17 (690)	25.92 (658)	17.69 (449)	18.88 (480)	14.50 (368)	8.88 (226)	34.13 (867)	13.52 (343)	35.69 (907)	22.31 (567)	64.0 (1626)	30.3 (770)
	326T																33.4 (848)
	364T																38.3 (973)
	365T																44.6 (1133)
	404T																48.4 (1229)
	405T																53.4 (1356)
	444T																67.2 (1707)
	445T																72.8 (1850)
447T	77.4 (1967)																
2048 10 x 8 (254 x 203)	365T	1.13 (29)	1.62 (41)	1.19 (30)	1.88 (48)	27.17 (690)	25.92 (658)	17.69 (449)	21.65 (550)	14.50 (368)	10.62 (270)	34.13 (867)	13.52 (343)	42.94 (1091)	25.44 (646)	80.0 (2032)	33.4 (848)
	404T																38.3 (973)
	405T																44.6 (1133)
	444T																48.4 (1229)
	445T					53.4 (1356)											
	447T					67.2 (1707)											
	449T					72.8 (1850)											
	G5010					31.17 (792)	29.92 (760)						14.00 (356)				92.0 (2337)
2524 10 x 10 (254 x 254)	256T	1.19 (30)	1.88 (48)	1.19 (30)	1.88 (48)	23.17 (589)	21.92 (557)	13.38 (340)	19.31 (490)	13.63 (346)	8.25 (210)	31.44 (799)	12.0 (305)	33.56 (852)	21.50 (546)	57.0 (1448)	23.2 (589)
	284T																27.8 (706)
	286T																30.3 (770)
	324T																33.4 (848)
	326T																60.0 (1524)
	364T																38.3 (973)
	365T																44.6 (1133)
2530 10 x 10 (254 x 254)	284T	1.19 (30)	1.88 (48)	1.19 (30)	1.88 (49)	23.17 (589)	21.92 (557)	15.75 (400)	16.94 (430)	13.63 (346)	9.81 (249)	31.32 (796)	12.00 (305)	38.06 (967)	25.44 (646)	57.0 (1448)	27.8 (706)
	286T																30.3 (779)
	324T																33.4 (848)
	326T																60.0 (1524)
	364T					38.3 (973)											
	365T					44.6 (1133)											
	404T					68.0 (1727)											
	405T					72.8 (1850)											
444T	77.4 (1967)																
2538 12 x 10 (305 x 254)	364T	1.19 (30)	1.88 (48)	1.25 (24)	2.00 (51)	27.17 (690)	25.92 (658)	17.69 (449)	23.23 (590)	14.50 (368)	10.40 (264)	34.13 (867)	13.52 (343)	44.00 (1118)	25.44 (646)	64.0 (1626)	33.4 (848)
	365T																38.3 (973)
	404T																44.6 (1133)
	405T																48.4 (1229)
	444T																53.4 (1356)
	445T																67.2 (1707)
	447T																72.8 (1850)